

# Integrated Pest Management and Rural Health

Gert van der Laan



**ldoh**  
LEARNING AND DEVELOPING OCCUPATIONAL HEALTH

**Netherlands Center for  
Occupational Diseases**



UNIVERSITÀ DEGLI STUDI  
DI MILANO



National Institute for Public Health  
and the Environment  
*Ministry of Health, Welfare and Sport*

# Keys to Rural Health regarding pesticides



- Chain Approach (Erik Jors):
- Community Approach (Susan Brumby)
- One Health Approach
- BOHS approach (occupational health through primary and community health care)
  - Importance of Secondary Support System: Knowledge and Referral Centres
  - Research and Development
  - Education and Training
  - Connectivity

# Chain approach: Pesticides Program Uganda



- Training integrated pest management in local communities
- Training sellers of agrochemicals on safety issues
- Training applicators of pesticides for vector control
- Awareness raising of pesticide poisoning in local hospitals
- Influencing national regulations
- Stimulating National Poisoning Information Centre
- Exchange of PhD students from Kampala and Aarhus
- Evaluation
- Sustainable funding by DK
- Run by Eric Jors: sowing seeds of hope..





# Community approach (Susan Brumby)

Graduate Certificate  
of Agricultural  
Health and  
Medicine



The Graduate Certificate of Agricultural Health and Medicine (GCAHM) delivers specialist knowledge and skills to students currently employed, or wishing to gain employment, in rural and remote related professions.

readily manageable in urban settings. The GCertAgHealthMed highlights the ways in which the physical and mental health of rural and remote workforces can be improved.

This course highlights how health, safety and wellbeing are essential for productivity in primary industries and agribusiness. The GCertAgHealthMed expands upon the individual determinants of health to explore issues of climate change, agricultural practices, remote community sustainability and other social determinants of health in farming communities. Undertaking the GCertAgHealthMed will be beneficial to students wishing to undertake further study and improve health provision, research, safety,





*Awareness  
Series*  
**AGRICULTURE**



# Occupational Safety and Health in Agriculture- The BOHS Approach

Prepared in Public Interest

By

Indian Association of  
Occupational Health

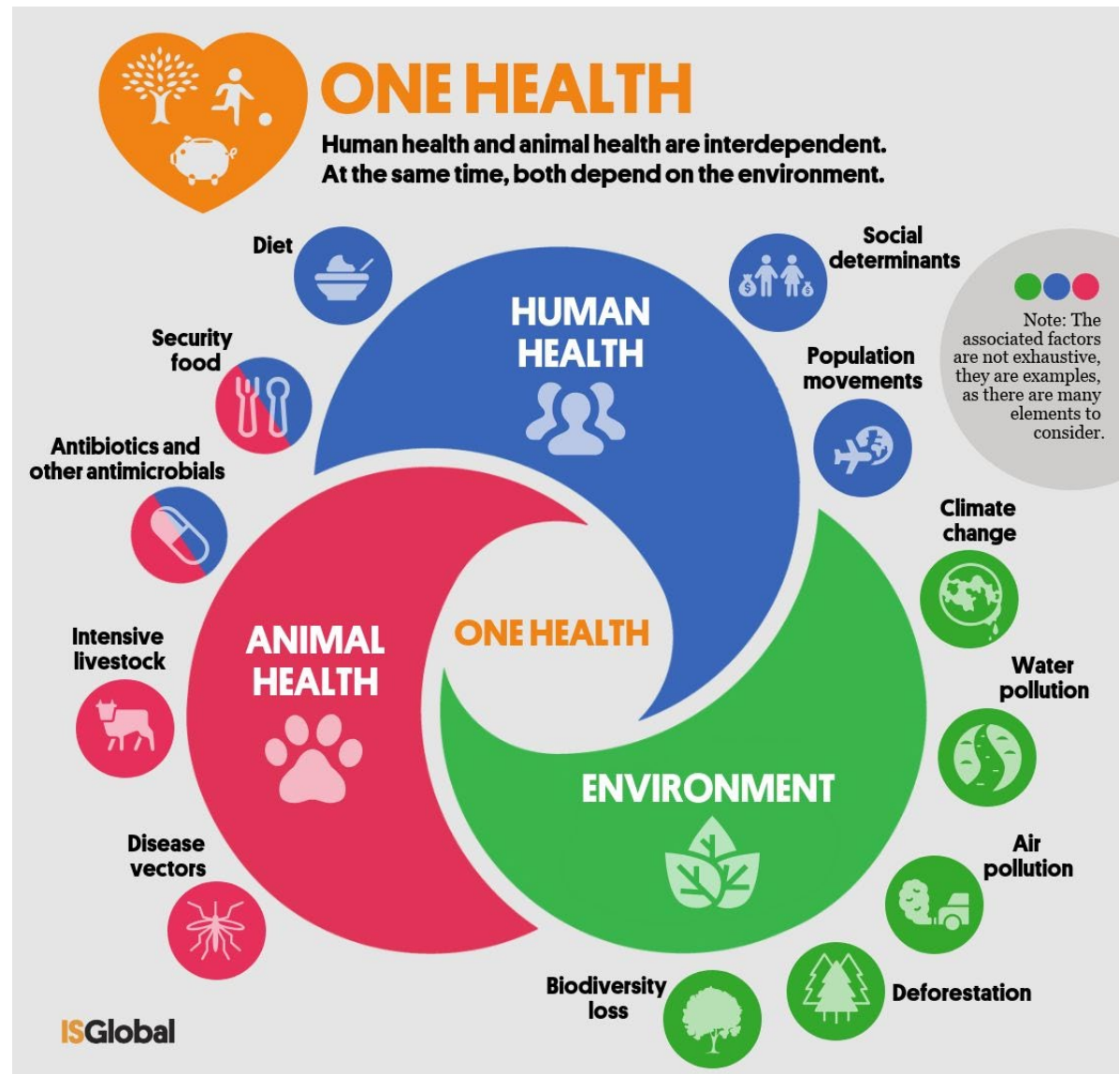
April, 2013

# One Health at risk:

Environment

Animal Health

Human Health



# Safe work with pesticides: preventing AOPI



- **Authorisation of Plant Protecting Products**
  - National and EU-level (specific circumstances in different areas)
  - Prescription of formulation (fluid, granule, powder)
- **Education and training**
  - Certificate of competence; licence to use
- **Technology**
  - Automatization of spraying in greenhouses
  - Drone precision application of pesticides
  - Pelleting seeds with pesticides
- **Protection**
  - Personal protection, re-entry times
- **Control**
  - Strict inspections, enforcement,
  - Residue control (market correction)



[AOPI: Acute Occupational Pesticide-related Illness]



# Keys to Agricultural Workers Health



- **Education and training**
  - Chain Approach (Erik Jors):
  - Community Approach (Susan Brumby)
  - WIND (Work Improvement in Neighbourhood Development) programme agriculture (ILO)
- **Collaboration**
  - One Health Approach, Connectivity
  - BOHS approach
  - Overcome professional territorialisme
- **Regulation**
- Develop robust measures and precautionary actions: *regulation of OHS is a public task and requires active and alert authorities*
  - ‘Harmfull Inertia’.
  - Competent authorities /Labour Inspectors



Thanks for  
your Attention

[g.vanderlaan@occmed.eu](mailto:g.vanderlaan@occmed.eu)